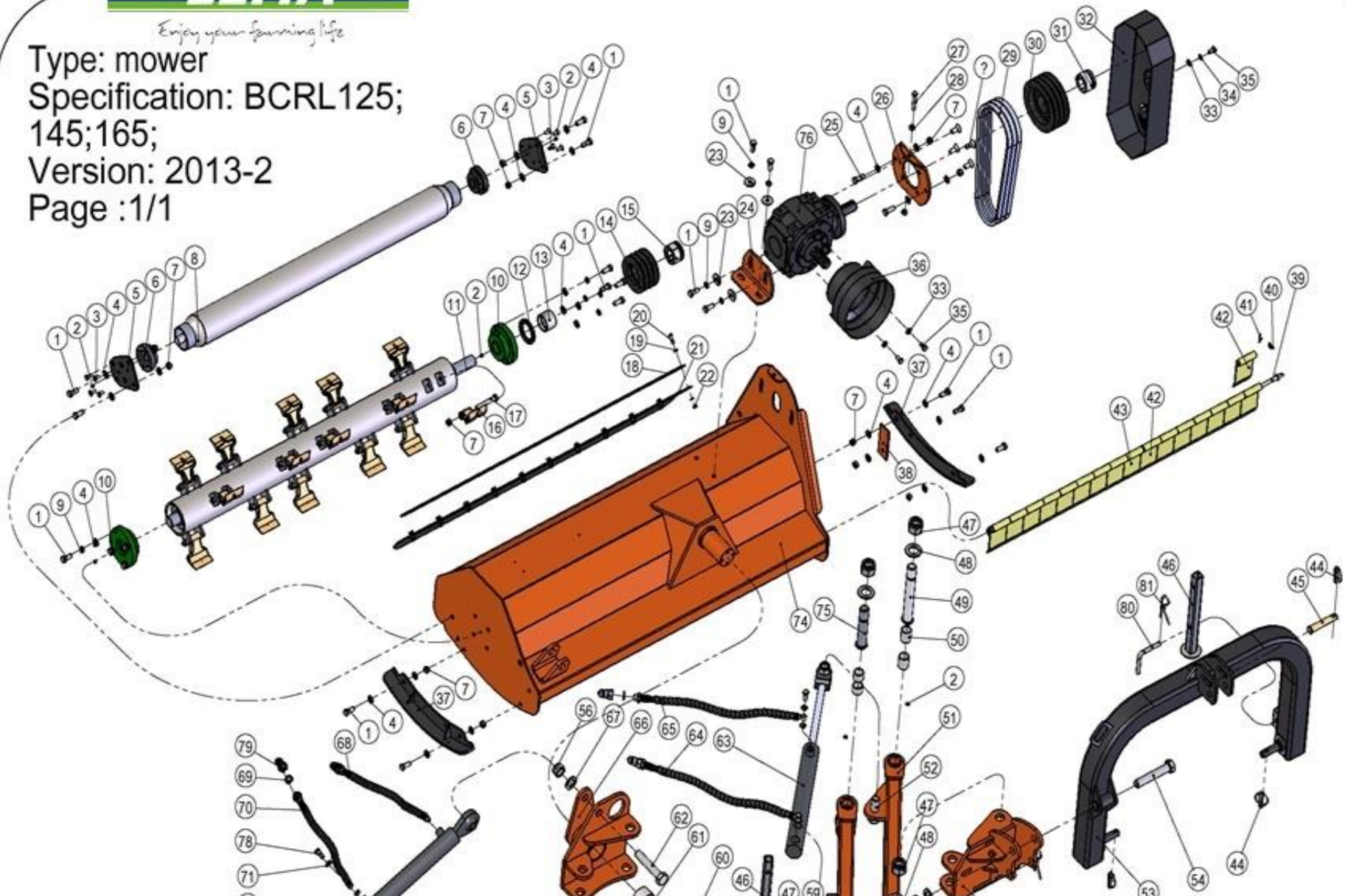
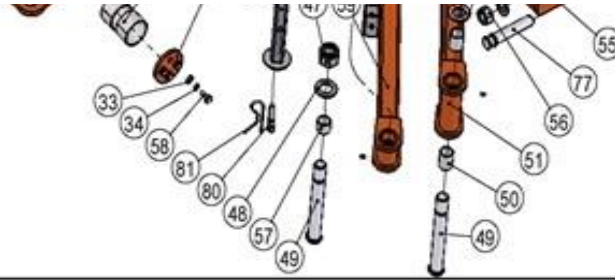
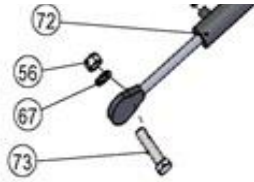


LOMA

Enjoy your spinning life

Type: mower
Specification: BCRL125;
145;165;
Version: 2013-2
Page :1/1





No.	Art. nr.	Art. code	Aantal	gewicht	tot. Gewicht	opmerkingen
1	14010100067	GB/T 5783-2000	21	0,043	0,903	
2	14000200001	GB1152.89	9	0,004	0,036	
3	14060100016	GB/T 70.3-2000	8	0,011	0,088	
4	14040000004	GB/T 95-2002	30	0,006	0,18	
5	11000100056	BCRL125-108	2	0,587	1,174	
6	11011500070	UCC205-A (钢座)	2	0,92	1,84	
7	14050100006	GB/T 889.1-2000	31	0,013	0,403	
8	11000200182	BCRL125-018	1	14,326	14,326	
9	14020000008	GB/T 93-1987	12	0,003	0,036	
10	11011500072	UC207	2	2,64	5,28	
11	11000200184	BCRL125-020	1	31,142	31,142	
12	11011200048	GB/T 13871.1-2007	1	0,016	0,016	
13	11000100069	EF175-103	1	0,364	0,364	
14	11011400014	EF175-126	1	2,408	2,408	
15	11011900001	Z3A-35*60	1	0,43	0,43	
16	11010200020	EFG125.102	20	0,484	9,68	
17	14010000009	GB/T 5782-2000	20	0,088	1,76	
18	11000000062	BCRL125-110	1	1,127	1,127	
19	14040000002	GB/T 95-2002	22	0,002	0,044	
20	14010100019	GB/T 5783-2000	11	0,016	0,176	
21	11000000063	BCRL125-111	1	0,639	0,639	
22	14050100002	GB/T 889.1-2000	11	0,005	0,055	

No.	Art. nr.	Art. code	Aantal	gewicht	tot. Gewicht	opmerkingen
23	14040100004	GB/T 96.2-2002	4	0,022	0,088	
24	11000000065	BCRL125-109	1	1,318	1,318	
25	14010100069	GB/T 5783-2000	2	0,047	0,094	
26	11000000064	BCRL125-107	1	1,421	1,421	
27	14010100046	GB/T 5783-2000	1	0,048	0,048	
28	14050000003	GB/T 41-2000	2	0,009	0,018	
29	11011300014	BX-1016	3		0	
30	11011400012	EF175-125	1	4,742	4,742	
31	11011900000	Z3A-33*60	1	0,49	0,49	
32	11000000066	BCRL125-112	1	3,215	3,215	
33	14040000003	GB/T 95-2002	7	0,003	0,021	
34	14020000007	GB/T 93-1987	5	0,002	0,01	
35	14010100038	GB/T 5783-2000	3	0,023	0,069	
36	11011800013	EF175-123	1	0,41	0,41	
37	11000200181	BCRL125-017	2	2,28	4,56	
38	11000000061	BCRL125-106	1	0,232	0,232	
39	11000100064	EF125-110	1	0,787	0,787	
40	14040000017	GB/T 95-2002	19	0,002	0,038	
41	14000100174	GB91.86	2	0,002	0,004	
42	11000100074	EF175-108	16	0,27	4,32	
43	11000100075	EF175-108A	1	0,27	0,27	
44	11011700014	Φ11	3	0,05	0,15	
45	11011700003	EF175-119	1	0,251	0,251	
46	11000200178	BCRL125-014	2	0,8	1,6	
47	14050100011	GB/T 889.1-2000	4	0,248	0,992	
48	14040000009	GB/T 95-2002	4	0,051	0,204	
49	11000100054	BCRL125-103	3	1,228	3,684	
50	11011600004	30*34*40SF-2	4	0,063	0,252	
51	11000200176	BCRL125-012	1	14,53	14,53	
52	14010000052	GB/T 5782-2000	1		0	
53	11000200175	BCRL125-011	1	27,58	27,58	
54	14010000051	GB/T 5782-2000	1		0	

No.	Art. nr.	Art. code	Aantal	gewicht	tot. Gewicht	opmerkingen
55	11000200180	BCRL125-016	1	12,28	12,28	
56	14050100010	GB/T 889.1-2000	4	0,097	0,388	
57	11011600003	30*34*25SF-2	4	0,039	0,156	
58	14010100039	GB/T 5783-2000	4	0,026	0,104	
59	11000200177	BCRL125-013	1	8,43	8,43	
60	11000000060	BCRL125-104	1	0,326	0,326	
61	11011600010	63*68*40SF-2	2	0,16	0,32	
62	14010000050	GB/T 5782-2000	1		0	
63	11011000005	BCRL125-102	1	6,96	6,96	
64	11010700009	BCRL125-021	1	0,794	0,794	
65	11010700010	BCRL125-021	1	0,794	0,794	
66	11000200179	BCRL125-015	1	11,93	11,93	
67	14040000008	GB/T 95-2002	3	0,031	0,093	
68	11010700011	BCRL125-021	1	0,794	0,794	
69	11011200003	BS/A21.50(G1/2)	4	0,001	0,004	
70	11010700012	BCRL125-021	1	0,794	0,794	
71	11011200007	M12	8	0	0	
72	11011000004	BCRL125-101	1	7,61	7,61	
73	14010000037	GB/T 5782-2000	1		0	
74	11000200183	BCRL125-019	1	55,62	55,62	
75	11000100055	BCRL125-105	1	0,84	0,84	
76	11010000007	XH50.300Z.02W	1	20,62	20,62	
77	11000100087	G.OS145-126	1	0,512	0,512	
78	11010600000	M12*1.25*32	4	0,029	0,116	
79	11010900020	G1\2	4	0,125	0,5	
80	11000100011	EF175.116	2	0,14	0,28	
81	11011700015	Φ4	3	0,02	0,06	
82	14060100046	GB/T 70.3-2000	4		0	

